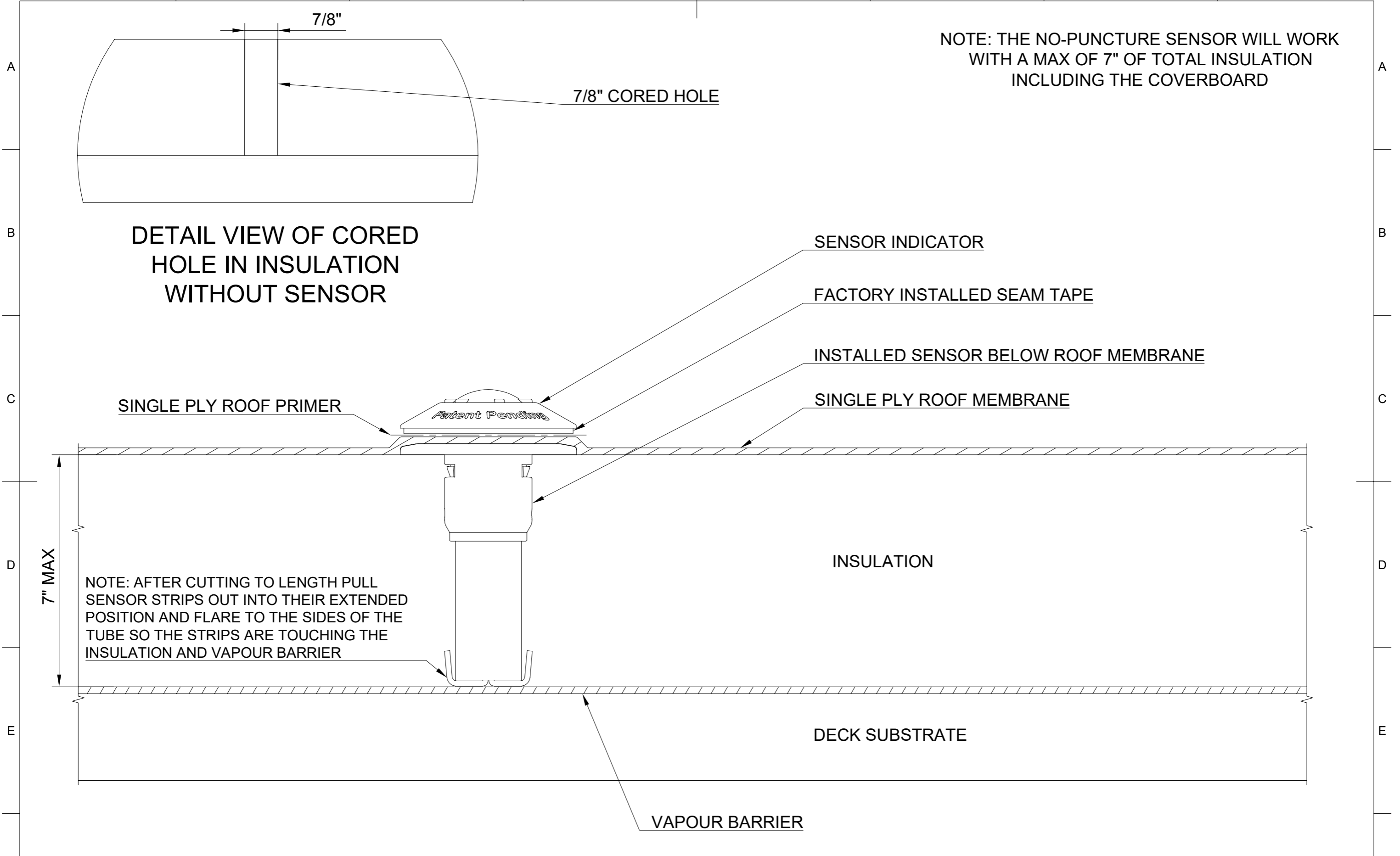


1 2 3 4 5 6 7 8



NOTE: THE NO-PUNCTURE SENSOR WILL WORK WITH A MAX OF 7" OF TOTAL INSULATION INCLUDING THE COVERBOARD

DETAIL VIEW OF CORED HOLE IN INSULATION WITHOUT SENSOR

7/8" CORED HOLE

7/8"

SENSOR INDICATOR

FACTORY INSTALLED SEAM TAPE

INSTALLED SENSOR BELOW ROOF MEMBRANE

SINGLE PLY ROOF MEMBRANE

SINGLE PLY ROOF PRIMER

Patent Pending

INSULATION

7" MAX

NOTE: AFTER CUTTING TO LENGTH PULL SENSOR STRIPS OUT INTO THEIR EXTENDED POSITION AND FLARE TO THE SIDES OF THE TUBE SO THE STRIPS ARE TOUCHING THE INSULATION AND VAPOUR BARRIER

DECK SUBSTRATE

VAPOUR BARRIER

Title  
No-Puncture (RMMS) Long Reach Sensor for Single Ply Membrane  
Installed in New Roofing With Insulation Only

NO-PUNCTURE ROOF DIAGNOSTICS INC	Rev. 1.2	Date of issue 05/22/2024	Sheet 1/1
----------------------------------	----------	--------------------------	-----------

1 2 3 4 5 6 7 8